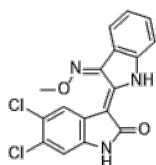


**Product Name** : KY19382  
**Cat. No.** : PC-25363  
**CAS No.** : 2226664-93-1  
**Batch No.** : PC-2536301  
**Chemical Name** : 5',6'-Dichloro-3-(methoxyimino)-[2,3'-biindolinylidene]-2'-one

## PHYSICAL AND CHEMICAL PROPERTIES

**Molecular Weight** : 360.19  
**Molecular Formula** : C<sub>17</sub>H<sub>11</sub>Cl<sub>2</sub>N<sub>3</sub>O<sub>2</sub>  
**Storage** : Powder -20°C 12 Months  
4°C 6 Months  
In solvent -20°C 6 Months  
-80°C 6 Months  
-20°C 6 Months

**Chemical Structure** :



## ANALYTICAL DATA

**Appearance** : Solid powder  
**<sup>1</sup>H NMR Spectrum** : Consistent with  
**HPLC** : Consistent with  
**NP** : Consistent with  
**Purity (HPLC and/or LCMS)** : >98%  
**Conclusion** : The product has been tested and complies with the given specifications.

**Caution: Product has not been fully validated for medical applications. Lab Use Only!**

E-mail: tech@probechem.com